

# EC0-1822

ATX Motherboard

The EC0-1822 motherboard adopts standard ATX specification and Intel H420E platform, supports Intel LGA1200 pin 10th Gen processor; provides 2 × DDR4 memory slot; supports PCI +PCIE expansion combination, multiple serial ports and multiple USB ports. The product can be widely used in industrial automation, Internet of Things, self-service terminal, petrochemical engineering, safety monitoring, intelligent transportation, environmental protection, communication and other fields.



## Product Features



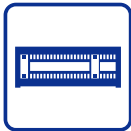
Supports Intel 10th Gen processor



Supports 2 × memory slot

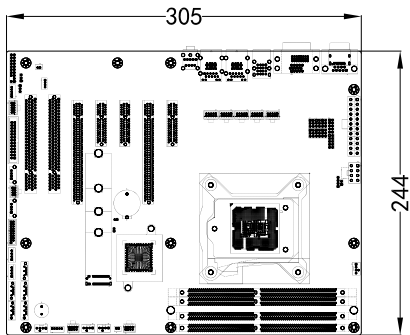


10 × USB port



4 × PCI  
3 × PCIE expansion

## Product Dimensions Drawing



(Please refer to the user manual to check detailed specifications and dimensions) (unit: MM)

## Product Specifications

Item	Description
Processor	Supports Intel LGA 1200 pin 10th Gen processor; maximum power consumption of processor TDP≤125W
Chipset	H420E
Memory	2 x DDR4 DIMM memory slot, a single memory supporting 32GB, the two supporting up to 64GB
Display Ports	Any two display ports among VGA, DP and DVI-D
Audio	Ports Supports MIC-IN/LINE-IN/LINE-OUT
LAN	2 × Gigabit LAN port, LAN1 supports LAN wakeup
Memory	4 × SATA3.0
I/O Port	6 × serial port, COM1 and COM2 support RS-232/RS-422/RS-485 mode selection 4 × USB 2.0 port and 6 × USB3.2 GEN1 port 1 × PS/2 port 1 × 8-channel digital I/O port 1 × TPM port
Bus Expansion	4 × PCI 2 × PCIe4 (actual x1 signal) 1 × PCIe16 1 × M.2 KEY M port (PCIe x 2, supporting sizes 2242/2280)
Power Supply	ATX power supply
Working Environment	-10°C~60°C
Storage Environment	-20°C~80°C
Constant Damp Heat	40°C 95%RH, non-condensing
Overall Dimensions	305 mm (L) × 244 mm (W)
Operating System	WIN10、Linux

## Ordering Information

Part No.	Model	Description
0030-023461	EC0-1822	ATX motherboard /H420E chipset/10th Gen LGA1200 pin processor/2 x DDR4 DIMM memory slot, supporting expansion up to 64 GB/any two display ports among VGA, DP, DVI-D/4 × SATA3.0, 1 × M.2 (PCIe3.0 x2 M-key 2280 type)/2 × Gigabit LAN port/6 × USB 3.2 Gen 1, 4 × USB 2.0/6 × COM/1 group of audio ports/1 × 8 bit GPIO/1 × TPM/1 × LPT/1 × LPC/1 × PS2 motherboard built-in/expansion: 4 × PCI, 1 × PCI E x16, 2 × PCIe4 (actually providing the speed of x1)

Note: EVOC Intelligent reserves the right to final interpretation of product specifications and ordering information etc.